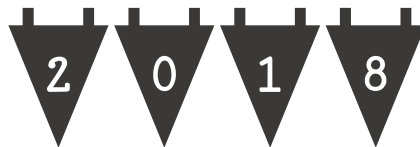


# LONG BUCKBY MACHINE KNITTERS



## FORTHCOMING EVENTS

### CLUB MEETINGS

## Today

9<sup>th</sup> July

**MACHINE KNITTING AND OTHER CRAFTS**

### COMING UP:

13<sup>th</sup> August

**COLOUR AND DESIGN**

10<sup>th</sup> September

**STITCH PATTERN TECHNOLOGY**

8<sup>th</sup> October

**RIBBING with Sue Booth**

12<sup>th</sup> November

**GADGETS and MACHINES – display and maintenance**

10<sup>th</sup> December

**END OF YEAR CELEBRATION – competition, display and sales**

- At meetings where we do not have an outside speaker, club members are encouraged to participate: please see Lynda if you would like to demonstrate or show a special technique or item
- Please let us know if you have a special requirement in case of emergency, e.g. a mobility problem which would mean a special arrangement in case of evacuation of the building
- **Please also respect the demonstrators and other members, some of whom have hearing impairment, by not talking during the demonstrations. \*\*PLEASE SWITCH OFF YOUR PHONE!\*\***

### WORKSHOPS



ALL WORKSHOPS RUN FROM 1-4 [ARRIVE FROM 12.30, BRING YOUR LUNCH IF YOU WISH] AT LONG BUCKBY COMMUNITY CENTRE. COST £15 TO INCLUDE USE OF EQUIPMENT. THE MAIN FOCUS OF THE WORKSHOPS IS AS BELOW, BUT ALTERNATIVELY, AS EVER, JOIN OUR WORKSHOPS TO PRACTISE OR LEARN ANOTHER SKILL OF YOUR CHOICE [BUT DO DISCUSS THIS WITH US FIRST!]

Tea and coffee provided. Machines also provided, let us know which machine you prefer, so we can make it available.

### 16<sup>th</sup> July **ADAPTING PATTERNS**

#### JULY 16<sup>TH</sup> PATTERN ADAPTATION

Find out how to adapt patterns for knitting on the machine. Hand knit to machine knit, simple shape to more complex design, knitting on the edge and embellishment to customise your garment.

I will have my computer and printer available for designing patterns on the day or bring your own.

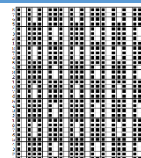


### 17<sup>th</sup> Sept **ONE PUNCHCARD, MANY PATTERNS/book by August meeting**

#### SEPT 17<sup>TH</sup> ONE PUNCH CARD, MANY PATTERNS

This is an opportunity to play about with punch card or electronic patterns. There have been several booklets published on this theme, which will be available, as will worksheets, punch cards, yarn and advice.

Try tuck, slip, weaving, lace, plating.....and more!



### CLUB NEWS

**The committee met before the June meeting, and decided to make the following changes to membership:**

December meetings will now include an AGM

Membership subscriptions will be payable in December at £5

The monthly cost would be £2.50 [£4 for outside speaker] for members and £4 [£5] for guests [who can visit up to three times a year]

## OTHER EVENTS

**July 28-29<sup>th</sup>, 2018 Fibre East** <http://www.fibre-east.co.uk/>

Admission Fee: Adults – £8 per day per person

Venue: Redborne Upper School and Community College, Flitwick Road, Ampthill, Bedford, MK45 2NU

**1st September 2018: Southern Wool Show, Newbury Race Course**

[www.southernwoolshow.co.uk/index.htm/](http://www.southernwoolshow.co.uk/index.htm/)

**21st-22nd September 2018: Crafting Live, Stoneleigh Park, Coventry** [www.craftinglive.co.uk/](http://www.craftinglive.co.uk/)

**November 10-11<sup>th</sup> 2018 Nottingham Yarn Expo** <https://www.nottinghamyarnexpo.com/>

Market place Sunday 11th November 2018/Workshops Saturday 10th and Sunday 11th of November 2018

Nottingham Conference Centre, Goldsmith Street Entrance, Nottingham. NG1 4BU

## CLUB SERVICES

### VOLUNTEERS AVAILABLE AND NEEDED

We offer assistance to new and improving machine knitters. If you would like to volunteer as a Knitting Buddy, please let us know, and we can pair learners with buddies, geographically if possible. If you need assistance, please email Lynda at [administrator@longbuckbymk.com](mailto:administrator@longbuckbymk.com) in the first instance.



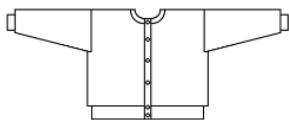
### EQUIPMENT HIRE

We have a comprehensive list of equipment available for loan, including full machines as well as accessories. See Margaret for details.

We are also setting up a free lending library and would welcome donations of hardback machine knitting books for this purpose.



### PATTERNS



In addition to patterns available in this newsletter and on our website, Lynda is also willing to make bespoke patterns via Knitware for members: these will be available as printouts or pdf files. Form attached for orders, or just let Lynda know the details.

## SMALL ADS

### BUSINESS ADS

#### ❖ Knits 'n' Bits [Long Buckby]

We buy and sell used [serviced] knitting machines and accessories, and also sell books, punchcards, spares and more. Contact Wendy on 01327-842335 or email [knitsnbits@live.co.uk](mailto:knitsnbits@live.co.uk). N.B. Response will be a little slower at the moment than usual, but she is still in business.

❖ **Elsie's Wool Shop: Ma's Buttons** in Victoria Road, Rushden, just off the high street. They supply wool, all plies, including cones and a large selection of buttons and haberdashery items. <https://www.masbuttons.co.uk/>

### FOR SALE

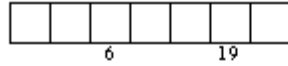
**Brother Single bed colour changer KHC820a £10** Kath Blundell 01788 578137

### WANTED

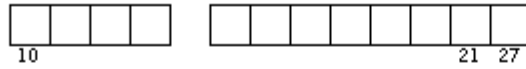
**PLEASE LET ME HAVE DETAILS OF ANYTHING YOU WOULD LIKE TO ADVERTISE IN THIS SPACE. SALES AND WANTED – FREE ADVERTISING!**

CRAFTING FUN

COHRETC



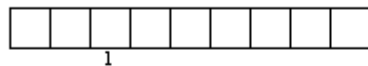
HADN GITNITNK



HAIMENC TTIGKINN



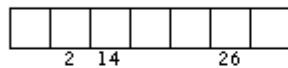
LELYJWERE



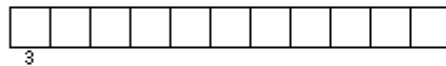
PISNING



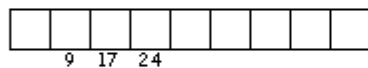
NEAGIWV



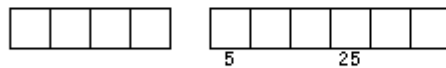
KESIDSNMAGR



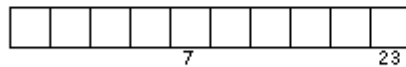
GIHNTTCSI



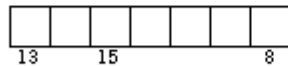
RACD NAMKIG



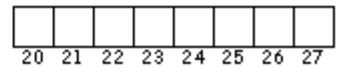
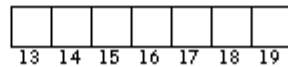
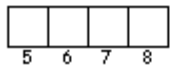
PARACFEPTR



MAMCEAR



MIHKIUOMO



Unscramble each of the clue words.

Copy the letters in the numbered cells to other cells with the same number.

## TODAY'S THEME: OTHER CRAFTS AND MACHINE KNITTING

As we have invited members to bring their other craft interests to our meeting today, I am not entirely sure what we will get: however, here is a selection of distinct possibilities, and how they relate to machine knitting.

### CROCHET

The main way I have used crochet with machine knitting is on the edge of garments, and it suits me well to finish my knits by hand in this way. I nearly always use double crochet, and sometimes increase on the second and subsequent rows to give a frill, but if you want a more professional look, why not try this book: Crocheting on the Edge by Nicky Epstein <https://www.amazon.co.uk/Crocheting-Edge-Bobbles-Ruffles-Scallops/dp/1933027355>

But I expect our members will come up with many more techniques than I have mastered!

### HAND KNITTING

Hand and machine knitting can complement each other, rather than competing as separate crafts: I have often taken the strain out of boring long pieces of handknitting, by doing bits on the machine, and then finishing by hand.

But hand knitting yarns are also of interest to machine knitters: wind them into cakes, use them in weaving, or make embellishments. Likewise, machine knitting remnants can be made into hand knitted garments, especially via the patchwork knitting method: see our website for instructions <http://www.longbuckbymk.com/index.php/patterns/hand-knitting>

### SPINNING

Spinning your own yarn is very satisfying, and you can make yarns that nobody else can get. Using your own hand spun in machine knitting is possible, and not difficult, but thicker yarns can always be used in knitweave.

Spinning equipment need not be expensive or take up a lot of space. I often spin using a spindle, which can be bought for under £10, although they can also be more expensive.

<https://www.interweave.com/article/spinning/about-drop-spindle-spinning/>

has information about spindles, and there are lots of tutorials on YouTube. I

found it best to start without trying to drop the spindle, using my left hand to hold the spindle and twist it [horizontally] and my right hand to draft. It wasn't long before I was confident enough to use it properly, with the spindle dropping below my left hand.



### WEAVING

Weaving comes in many forms, and machine knitters are most familiar with knitweave, where the knitting acts as the warp, and the weft is carried across the needles.

Loom weaving can be done on a pin loom, weaving squares using a needle, or a rigid heddle loom, or a shaft loom, as well as other variations. <https://www.weftblown.com/pages/buying-guide-weaving-looms> gives illustrated examples of the types of weaving loom you can buy and use.

Woven fabric can be used to embellish knitted garments, or vice versa.

<https://www.youtube.com/watch?v=DSEjg49kYQ4> shows Kim Morgan of The Saori Shed in Diss, from whom I bought my first Saori loom, and who is also a machine knitter. See <http://www.twistedtailor.co.uk/> for examples of her work incorporating both crafts.

## JEWELLERY MAKING

Beads can be used in machine knitting, and wire can also be used to make i-cords, see [www.erica.co.uk](http://www.erica.co.uk) for instructions. I once used a wire i-cord with a single Pandora [copy] bead to make a necklace for my sister in law. One of her friends offered me £20 to make another [I didn't take the money]. Time taken: 30 minutes.

## CARD AND PAPER CRAFTS

Machine knitting could be used to provide the 'picture' element of a handmade card. This might be a way to use up those design swatches.

Examples of hand knitted and crochet cards can be found here:

<https://www.pinterest.co.uk/pin/248683210657775978/?lp=true>

## DRESSMAKING

An obvious use for machine knitting is cut and sew using dressmaking patterns, but how about using a narrow band of stocking stitch as an alternative to bias binding? I heard about that from a weaver, who couldn't find bias binding to match her handwoven garments:

<https://www.ravelry.com/projects/Erial2ni/swing-jacket> for the details, and further to that, she says "The binding is knitted using the same yarn as the woven fabric. It was knit on an inexpensive Brother knitting machine about 10 stitches wide and six yards or so long. Machine sewn to one side and hand sewn to the other. It was as flexible as a bias binding and I liked the look." <https://www.ravelry.com/discuss/weaving-to-wear/3037579/351-375#356>

## LOCAL[ISH] PLACES TO LEARN/BUY SUPPLIES:

<http://www.yarnshopnorthampton.co.uk/> Get Knitting, Kingsley Park Terrace, Northampton for yarn and some tuition and knitting club

<https://www.the-wool-baa.co.uk/> yarn shop in Daventry and on a narrowboat

<https://www.manfieldcrafts.com/> yarn shop in Wellingborough with knitting club

<https://www.toftuk.com/home.aspx> Dunchurch, Rugby for yarn and workshops in crochet etc.

<http://knitone.uk.com/> yarn shop in Leicester LE1 6BT with classes in knitting and crochet

<http://beautifulcloth.co.uk/> Saori weaving studio in Leamington Spa with workshops/tuition

<https://www.fibrehut.co.uk/> for spinning and weaving, including tuition B94 6EA Hockley Heath

<https://www.winghamwoolwork.co.uk/> for spinning and weaving and tuition S62 7TN Rotherham

<http://www.woolwarehouse.co.uk/> in Leamington CV31 1XB, mostly online yarn sales, but has a display area on the premises. Very good selection and service.

## STORAGE IDEA



Found in Wilko, these interlocking storage containers seemed a good idea for my messy space by my knitting machine, and only £4 for all of them

<https://www.wilko.com/en-uk/wilko-interlocking-drawer-organisers-8pk/p/0465243>

## PUZZLE ANSWERS

crochet

hand knitting

machine knitting

jewellery

spinning

weaving

dressmaking

stitching

card making

papercraft

macrame

kumihimo

We do more than machine knitting