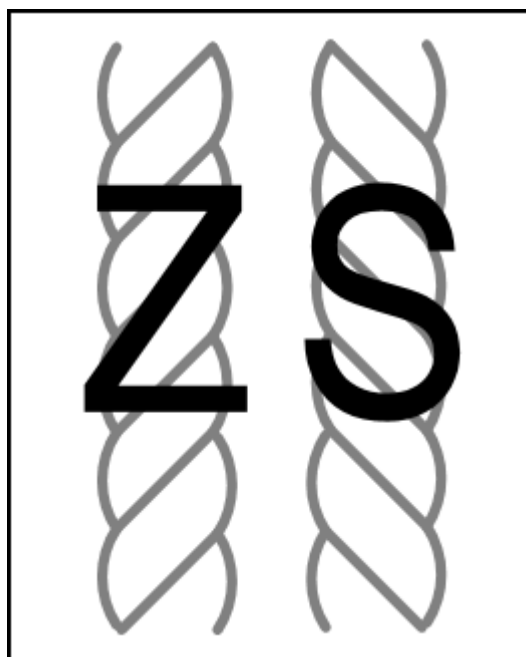


LONG BUCKBY MACHINE KNITTERS



FORTHCOMING EVENTS

CLUB MEETINGS

Today

13th June **RIPPING YARNS:** All about yarn, and how to knit with unusual and challenging yarn.

COMING UP:

- 11th July **CHANGING DIRECTION** Knitting in different ways: sideways, modular as well as shaping using holding position
- 8th Aug **STITCHED UP: A VARIETY OF PATTERNS**
Exploring the versatility of automatic pattern capability, as well as a bit of hand manipulation
- 12th Sept **ACCESSORIES** Knitting accessories
- 10th Oct **SET IN SLEEVES** on the machine with guest speaker SUE BOOTH
- 14th Nov **GADGETS** practical session, opportunity to practise with gadgets like colour changer, cast off linker etc.
- 12th Dec **COMPETITION, DISPLAY AND SALES** End of year celebration

WORKSHOPS



Workshops for 2016 are as follows: [although the workshops have a theme, we can run personalised workshops at the same time e.g. beginners' techniques, software/ computing for knitters, or using specific equipment

20 th June	1-4 Doors open at 12.30	WORKSHOP: machines supplied/ booking essential Combining Yarns: Following on from club meeting, including mixing yarns for effect	£15
19 th Sept	1-4 Doors open at 12.30	WORKSHOP: machines supplied/ booking essential Using the Garter Bar	£15

All workshops to be booked in advance by non-refundable full payment. Cheques will be cashed at the time of the workshop, and should be made out to Long Buckby Machine Knitters.

OTHER EVENTS

18th June 2016: National Guild Day with AGM, Reepham & Cherry Willingham Village Hall, Reepham, Lincolnshire. <http://www.guild-mach-knit.org.uk/>

THE BIG PICKNIT

Date: **June 18, 2016.** Time: **11 am until 3 pm**

We will meet here:

ABINGTON PARK BY THE BANDSTAND

Abington Park, Northampton, NN1 5LW Northamptonshire

Directions:

We will be by the bandstand in Abington Park, not too far from the museum and café.



DESCRIPTION OF THE KIP:

We would love all knitters, crocheters, spinners to get together and have a lovely day out. Bring a picnic by all means although there is a café and also ice cream vans in the park. The Knitted Street Project will be there knitting and crocheting bricks for the woolly house being created for AgeUK but please just bring anything you'd like to work on. There should be chairs for people to sit on, or bring a picnic blanket etc of your own.

What to bring:

Weather relevant gear – hats, suncream, dragon repellent spray etc. Sunshade if sunny.

Backup plan: The Stitch and Make Studio on Burns Street, Northampton NN1 3QE

Is this KIP going to be exclusive to knitting?No **Are there any bathrooms nearby?**Yes, Free

UNIVERSITY DEGREE SHOWS:

NORTHAMPTON: SCHOOL OF THE ARTS DEGREE SHOW 2016

Date: now– Sunday 19 June 2016 [free admission]**Location:** Avenue Campus, St George's Avenue, NN2 6JD

<http://www.northampton.ac.uk/events/school-of-the-arts-degree-show-2016/>

LEICESTER DE MONTFORT DEGREE SHOW:

Saturday 18 June 2016 : 11am – 4pm/Monday 20 June 2016 – Thursday June 2016: 10am – 5pm

<http://www.dmu.ac.uk/degree-show/degree-show/degree-show.aspx>

SMALL ADS

FOR SALE

Knitmaster HK160 mid gauge machine. It is in good working condition and comes with all the necessary tools. The manual and the extremely rare Leclerq book are also included along with several punched and unpunched cards. I would like £180 but am open to offers.

Marion Rutherford 01234712755



WANTED

Machine Knitters needed!

❖ Mhairi MacLachlan (maclachlan.mhairi@gmail.com) 07813 897 528

❖ Harrison Winter of HCR knits [<http://www.hcrknits.com/>] Contact: info@hcrknits.com

BUSINESS ADS

❖ Knits 'n' Bits [Long Buckby]

We buy and sell used [serviced] knitting machines and accessories, and also sell books, punchcards, spares and more. Contact Wendy on 01327-842335 or email knitsnbits@live.co.uk. N.B. Response will be a little slower at the moment than usual, but she is still in business.

❖ Elsie's Wool Shop: Ma's Buttons

in Victoria Road, Rushden, just off the high street. They supply wool, all plies, including cones and a large selection of buttons and haberdashery items.

email mcginnelsie@yahoo.com or telephone 01933 380610 evenings or weekends.

PLEASE LET ME HAVE DETAILS OF ANYTHING YOU WOULD LIKE TO ADVERTISE IN THIS SPACE.

SALES AND WANTED – FREE ADVERTISING!

Newsletter of Long Buckby Machine Knitters ©2016

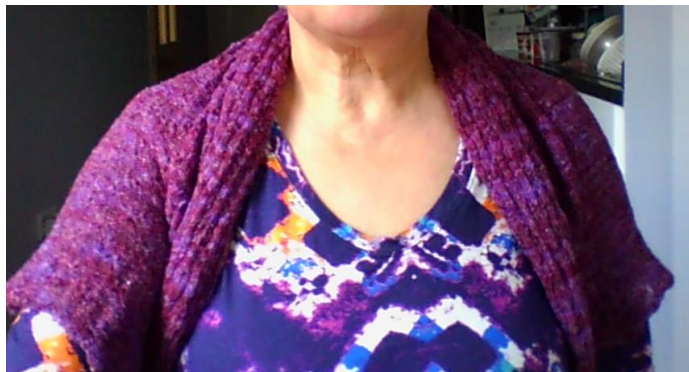
YARN ALPHABET QUIZ

Letter	No of letters in word	Clue
A	6	South American animal
B	6	Fibre from a Chinese grass
C	6	A plant fibre
D	3	Added colour
E	7	An effect [scarf] yarn
F	5	Yarn is made from it
G	5	A green plant
H	4	Cannabis plant
I	10,4 [2words]	Describes waste from the knitting industry
J	4	Fibre used for ropes
K	8	Making yarn into jumpers etc.
L	9	Fibre from young sheep
M	6	Fibre from goats
N	5	Man made fibre
O	7,6 [2 words]	A plant fibre produced without chemicals
P	9	Man made fibre
Q	6	Musk ox fibre
R	5	Man made 'silk'
S	4	Fibre from worms
T	6	The result of spinning fibre into long strands
U	6,4 [2 words]	Knitting resource with no added colour
V	7	A process for converting plant material into yarn
W	4	Sheep fibre
X	5,5 [2 words]x is in centre of first word	A common label on clothes which have more than one type of yarn
Y	4	A word for the stuff we knit with
Z	1,5 [2 words]	A spinning term to show the direction of spinning

Answers on last page

RASPBERRY RIPPLE

A simple shrug made with two rectangles of knitting.



Yarn used: 'industrial' yarn about 3 ply weight, knitted at Tension 7. Any yarn could be used, measurements are approximate.

My shrug fitted me, a size 14 with broad shoulders. It would also fit a smaller size. Larger sizes could add a few more stitches and rows.

BODY

29 inches by 13 inches

Cast on L52/R51, over needles set up as follows: |.|||.|||-----|.|||.| across bed, i.e. groups of three stitches with one needle out of work between them, and a single needle at both edges.

Knit two rows, then set carriage to read card [see diagram]

Knit one row, then set up for tuck stitch.

Knit 350 rows.

Cancel tuck, knit 2 rows, then cast off.

SKIRT

Cast on as for body.

Set up as for body, and knit 560 rows.

Cast off [you can hang cast on edge on needles before casting off].

TO FINISH.

Fold body in half widthways. Stitch together about 4-5 inches each end to form sleeves.

Stitch edge of skirt to body, with join at centre back [top]. You might want to mark the skirt at halfway points, and quarter way points, in order to match up to body.

ALTERNATIVE

When knitting skirt, at the following points knit a dart.

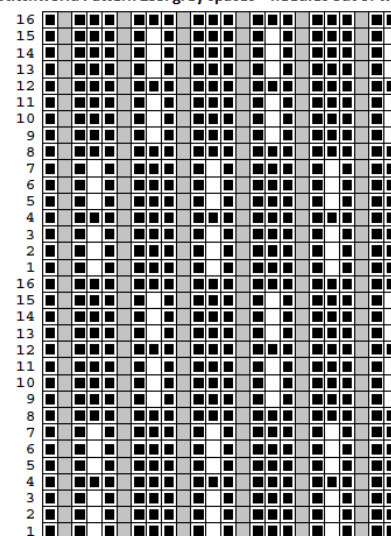
R140, 280, 420, 560.

To knit the dart, put all but two groups of needles into holding position, then put carriage to hold, and knit two rows. Bring two more groups of needles into work and knit two rows. Continue like this until all needles are back in working position.

This will give you a skirt which flares and is less close fitting.

Tuck stitch scarf pattern

Stitchworld Pattern 288: grey spaces = needles out of work



YARN INFORMATION

Our presentation today outlines various different fibres and weights used in knitting yarn. You can access a general guide to **yarn weight** at the following places:

Wool Warehouse <http://www.woolwarehouse.co.uk/needle-size-yarn-weight-information>

Craft Yarn council [USA] <http://www.craftyarncouncil.com/weight.html>

Ravelry <http://www.ravelry.com/help/yarn/weights>

Angelika's Yarn Store <http://www.yarn-store.com/different-yarns-for-different-knitting-machines.html>

Diana Sullivan <http://diananatters.blogspot.co.uk/2011/04/ways-to-improve-your-knitting-learn.html>

Uppingham Yarns <http://www.wools.co.uk/machine-knitting-yarns.html> has a useful short guide to yarn counts for machine knitting

For an outline of **fibres** used in knitting:

World of Wool <http://www.worldofwool.co.uk/know.php> offers three pdf downloads about fibre and yarn

BBC <http://www.bbc.co.uk/schools/gcsebitesize/design/textiles/fibresrev1.shtml>

For sources of **machine knitting yarn** in the UK:

Local[ish]

Uppingham Yarns <http://www.wools.co.uk/>

Yeoman Yarns <http://www.yeoman-yarns.co.uk/>

BSK <http://www.bsk.co.uk/>

Further afield

Jamieson <http://www.jamiesonandsmith.co.uk/>

Elton Vale <http://eltonvaleyarns.co.uk/>

Metropolitan <http://www.metropolitanmachineknitting.co.uk/>

Rooster yarns <http://www.roosteryarns.com/>

Yarn On Cone <http://www.yarnoncone.co.uk/>



IDEAS FOR COMBINING YARNS

1. Twisting and Plying
 - a. Using a Daruma Yarn Twister
 - b. Using a Hague Twisting Stack
 - c. Or combining on the machine by using multiple strands [try using sewing cotton alongside a thicker yarn, then changing colour every so often, for subtle changes of shade]
2. Striping
 - a. Using different colours
 - b. Using different yarn textures or weight
3. Plating
 - a. Using one yarn to back another
 - b. Combining with stitch pattern, e.g. tuck for a multicolour effect
4. Weaving

Using stitch pattern punch cards, or just by hand manipulation of needles

5. Thrum balls

Thrums are lengths of waste yarn. You can knot them together to make a longer length of yarn, then knit or weave them for interesting effects. Try using this weaver's knot technique to join them <http://jennybellairs.blogspot.co.uk/2010/01/fast-pictorial-guide-to-weavers-knot.html> .

I have successfully knitted yarn on the machine with knots in it, as long as I go slowly at the point of the knot – however, I am offering no guarantees as to the success of this. You may prefer to weave thrum balls!



Solution to yarn quiz	alpaca	bamboo
cotton	dye	eyelash
fibre	grass	hemp
Industrial yarn	jute	knitting
lambswool	mohair	nylon
Organic cotton	polyester	qiviut
rayon	silk	thread
Undyed yarn	viscose	wool
Mixed fibre	yarn	Z twist