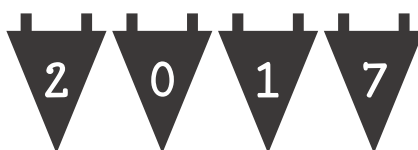


LONG BUCKBY MACHINE KNITTERS



FORTHCOMING EVENTS

CLUB MEETINGS

Today

13th Nov

GADGETS practical session with various accessories

COMING UP:

11th Dec COMPETITION, DISPLAY and SALES [Free Entry!]

Including Wendy Piper [Knits'n'Bits].

At this meeting, members are invited to submit an entry [or two] for our annual showcase event, with the chance to be selected by members' secret ballot for the Long Buckby Trophy: the winner keeps the trophy for a year, and retains a coaster for life!

8th Jan PATTERNS: availability and issues

12th Feb PATTERNS: designing, adapting, using software

12th March BILL KING

9th April NECKLINES

- **At meetings where we do not have an outside speaker, club members are encouraged to participate: please see Lynda if you would like to demonstrate or show a special technique or item**
- **Please let us know if you have a special requirement in case of emergency, e.g. a mobility problem which would mean a special arrangement in case of evacuation of the building**
- **Please also respect the demonstrators and other members, some of whom have hearing impairment, by not talking during the demonstrations. **PLEASE SWITCH OFF YOUR PHONE!****

WORKSHOPS



ALL WORKSHOPS RUN FROM 1-4 AT LONG BUCKBY COMMUNITY CENTRE. COST £15 TO INCLUDE USE OF EQUIPMENT.

2018 workshops

16th April BEGINNERS' NECKLINES

16th July ADAPTING PATTERNS

17th Sept ONE PUNCHCARD, MANY PATTERNS

OTHER EVENTS

GMK Heart of England Meet Up

This is open to members of the Guild of Machine Knitters £2 inc. refreshments
WE ALSO WELCOME NON GUILD MEMBERS! £3 inc. refreshments

Saturday November 18th, 10-12.30 pm, at Houlton - this is a new suburb on the A428 between Hillmorton (Rugby) and Crick. The nearest postcode is CV23 0AB which is The Tuning Fork Cafe but the venue is actually The Barn a community centre, right next door. It is easily accessible from the M1 J18 and there is free parking. Please share cars if possible as we understand the café is busy on Saturdays.

Wendy Piper of Knits n Bits will be there. She will be bringing yarn (new stock just arrived!), accessories, books and sponge bars. She can bring other items to order.
01327 842335 (Office hours only please) knitsnbits@live.co.uk

We will be bringing some hands-on workshops, some machines to play with and ask you to wear or bring something knitted if possible.

It is a lovely light venue which will suit us well but we are not allowed to bring packed lunches into the building, hence the 12.30 pm finish. The Tuning Fork Café will be serving lunches or there are plenty of pubs & cafes in Rugby.

16th-18th November 2017: The Stitching, Sewing & Hobbycrafts Show, Excel,
London ichfevents.co.uk/whats_on.php

23rd-26th November 2017: The Knitting & Stitching Show, Harrogate
theknittingandstitchingshow.com

Workbridge Christmas Craft Fair 2017 02/12/2017

Workbridge Bedford Road Northampton NN4 7AD <https://workbridge.org.uk/about-us/events/>

CLUB SERVICES



VOLUNTEERS AVAILABLE AND NEEDED

We offer assistance to new and improving machine knitters. If you would like to volunteer as a Knitting Buddy, please let us know, and we can pair learners with buddies, geographically if possible. If you need assistance, please email Lynda at administrator@longbuckbymk.com in the first instance.



EQUIPMENT HIRE

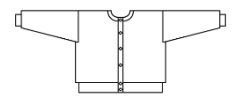
We have a comprehensive list of equipment available for loan, including full machines as well as accessories. See Margaret for details.

We are also setting up a free lending library, and would welcome donations of hardback machine knitting books for this purpose.



PATTERNS

In addition to patterns available in this newsletter and on our website, Lynda is also willing to make bespoke patterns via Knitware for members: these will be available as printouts or pdf files. Form attached for orders, or just let Lynda know the details.



SMALL ADS

WANTED

Machine Knitters needed!

- ❖ Mhairi MacLachlan (maclachlan.mhairi@gmail.com) 07813 897 528
- ❖ Harrison Winter of HCR knits [<http://www.hcrknits.com/>] Contact: info@hcrknits.com

BUSINESS ADS

❖ Knits 'n' Bits [Long Buckby]

We buy and sell used [serviced] knitting machines and accessories, and also sell books, punchcards, spares and more. Contact Wendy on 01327-842335 or email knitsnbits@live.co.uk. N.B. Response will be a little slower at the moment than usual, but she is still in business.

❖ Elsie's Wool Shop: Ma's Buttons

in Victoria Road, Rushden, just off the high street. They supply wool, all plies, including cones and a large selection of buttons and haberdashery items. email mcginnelsie@yahoo.com or telephone 01933 380610 evenings or weekends.

FOR SALE

Malcolm says:

"I have about 150 cones of knitting machine yarn in Peterborough for sale currently and a further 500-600 cones to bring from my late parent's home to also sell. I am selling the cones for £5, the price is adjusted for small cones or larger ones over 1kg. There are all colours, textures and weights. There are several accessories and 2 knitting machines for sale too, a Brother KH894 and a Knitmaster 560 electronic."

The email address is 59yorkie@gmail.com



Knitting machine table £10. Pat Banyard Smith 01788 822091

Brother Single bed colour changer KHC820a £10 Kath Blundell 01788 578137

Brother Knitting Machine Model KH-891 and KR-850 Ribber in Horn Cabinet including Bench Seat/Storage Box

Accessories and instruction manual, Transfer Carriage and Knit-Leader

All in excellent condition but machine requires new sponge bar

Many extras including:-

Substantial stock of industrial and 4-ply yarn

Machine knitting maintenance book with video tape

Cone winder/Hole punch and punch cards/Work box for accessories

Assorted hardback and paperback "how to" and pattern books

Folder with many "useful hints" and patterns

Price : £275 o.n.o. Please contact Eileen Andrew 01788 822159 or jpandrew@tiscali.co.uk

PLEASE LET ME HAVE DETAILS OF ANYTHING YOU WOULD LIKE TO ADVERTISE IN THIS SPACE. SALES AND WANTED – FREE ADVERTISING!

PUZZLE

TRACKWORD

How many words of three or more letters can you find by tracking from one square to the next, going up, down, sideways or diagonally in order? You may not go through the same letter square again in any one word. Proper nouns are not allowed. What is the hidden nine-letter word? Try to find 20 words

E	C	A
S	C	R
S	O	Y



POPPY

[Wonderwool Wales 2018](#) wants to create a "Curtain of Poppies" to mark the centenary of the end of World War 1. Their aim is to have 887, 858 poppies, one for each person from the UK who died during that conflict.

The poppies need to be 6cm in diameter, and the link to Wonderwool Wales above gives hand-knitting and crochet patterns.

Sue Booth has kindly produced a poppies pattern that we can use to knit them on the machine, and has given permission for us to reproduce it [below], or you can download it at these locations:

- [Poppy Pattern as a PDF](#)
- [Poppy Pattern as a Word document](#)

You may need to adjust the main tension to 6 to get the required size.

If you manage to knit your poppies by the December meeting, we will collect them and pass them on

MACHINE KNITTED POPPIES

You will need to punch a one-line pattern (-00000000000-00000000000) or just (-0000000000) if you have an electronic machine.

Lock pattern on this row.

Using red 4-ply yarn, 'e' wrap 47 needs (23L/24R of 0).

T7 knit 2 rows (Brother machines select needles on last row).

Set carriage to slip.

Knit 10 rows.

Cancel slip.

Pick up first slip loop onto corresponding needle and knit 1 row.

Transfer alternate stitches, leaving empty needles out of work.

T4 knit 1 row.

Transfer alternate stitches, leaving empty needles out of work.

Change to black 4-ply yarn.

Knit 2 rows.

Transfer alternate stitches and move all stitches in to that working needles are together without gaps.

T7 knit 1 row.

Transfer alternate stitches and knit 1 row.

Break yarn and thread through stitches.

Pull tight and fasten black yarn off.

Using red, oversew the seam and pull tight (to make petal).

Fasten red yarn off.

PLEASE NOTE: YOU MAY HAVE TO ADJUST YOUR TENSION SLIGHTLY SO YOUR POPPY IS 6CM ACROSS.

If you want to knit several, please make 2m lengths of green I cord (over 4 stitches slipping in one direction) and sew pairs of poppies back to back at 10cm intervals.

Pattern copyright © Sue Booth 2017 and uploaded to this website with her permission.

ACCESSORIES FOR MACHINE KNITTING

Colour changers, garter bars, various transfer gadgets, ribbers, winders, twisters, linkers, charting devices.....Brother: Garter carriage

For information on all of these and more, and lots of manuals and pattern books for free, visit

<http://www.aboutknittingmachines.com/general-accessories.html>

<http://www.aboutknittingmachines.com/after-market-accessories.html>

which are links to the main pages about accessories, but further exploration of the site brings you so much more!

STORAGE

Another insight into my strange fibre world!

I recently bought a 'cone tree' from eBay, which is actually a shoe storage tree. It is wedged between the ceiling and the floor, and holds an abundance of cones [though only a small fraction of my hoard, sadly].

The middle picture shows the 'prongs' on which you hang shoes or cones.

I am rather [not really] offended by Microsoft, who chose to describe the first picture as a 'cluttered room'! And that's after I tidied it.

Should you wish to follow my lead they are available here http://www.ebay.co.uk/itm/3-7-Tier-Revolving-Tree-Shoe-Storage-Stand-Rack-Organiser-Chrome-Telescopic/382261113776?hash=item590089b3b0:m:mJD8ofp_zjKn_Gq6j6r1CFQ



PUZZLE ANSWERS

ACE ARC CAR COR CRY ORC ROC SOY ACES ARCS RACE ROSE CROSS RACES SCARY ACCESS ACROSS

SCARCE SECCO ACCESSORY