

LONG BUCKBY MACHINE KNITTERS

N E W S

O C T O B E R

2 0 1 8



FORTHCOMING EVENTS

CLUB MEETINGS

TODAY

8th October RIBBING with Sue Booth

COMING UP:

12th November GADGETS and MACHINES – display and maintenance

10th December END OF YEAR CELEBRATION – AGM, competition, display and sales

- At meetings where we do not have an outside speaker, club members are encouraged to participate: please see Lynda if you would like to demonstrate or show a special technique or item
- Please let us know if you have a special requirement in case of emergency, e.g. a mobility problem which would mean a special arrangement in case of evacuation of the building
- Please also respect the demonstrators and other members, some of whom have hearing impairment, by not talking during the demonstrations. ****PLEASE SWITCH OFF YOUR PHONE!****

WORKSHOPS

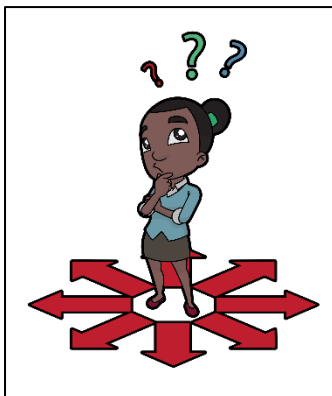


ALL WORKSHOPS RUN FROM 1-4 [ARRIVE FROM 12.30, BRING YOUR LUNCH IF YOU WISH] AT LONG BUCKBY COMMUNITY CENTRE. COST £15 TO INCLUDE USE OF EQUIPMENT. THE MAIN FOCUS OF THE WORKSHOPS IS AS BELOW, BUT ALTERNATIVELY, AS EVER, JOIN OUR WORKSHOPS TO PRACTISE OR LEARN ANOTHER SKILL OF YOUR CHOICE [BUT DO DISCUSS THIS WITH US FIRST!] TEA AND COFFEE PROVIDED. MACHINES ALSO PROVIDED, LET US KNOW WHICH MACHINE YOU PREFER, SO WE CAN MAKE IT AVAILABLE.

We are intending to hold 2 'beginners' workshops next year [see calendar at end of newsletter]: others can still join in!

CLUB NEWS

December meetings will now include an AGM/ Membership subscriptions will be payable in December at £5/The monthly cost will be £2.50 [£4 for outside speaker] for members and £4 [£5] for guests [who can visit up to three times a year]



December Challenge

Now is a good time to plan your entry to our December challenge, if you haven't already started!

The annual trophy is awarded to the item chosen by secret ballot of attendees at the AGM, as well as a keepsake coaster.

OTHER EVENTS

11th-14th October 2018: The Knitting & Stitching Show, Alexandra Palace

www.alexandrapalace.com/whats-on/

19th-20th October 2018: Crafting Live Peterborough www.craftinglive.co.uk/

21st October 2018: Leeds Knitting Show www.facebook.com/1935graceland

27-28 October The Big Textile Show at Leicester Racecourse www.thebigtextileshow.co.uk

November 10-11th 2018 Nottingham Yarn Expo <https://www.nottinghamyarnexpo.com/>

Market place Sunday 11th November 2018/Workshops Saturday 10th and Sunday 11th of November 2018
Nottingham Conference Centre, Goldsmith Street Entrance, Nottingham. NG1 4BU

Festiwool This year's event will be held on Saturday 10th November 2018, from 10am - 5pm at The Priory School, Bedford Road, Hitchin, SG5 2UR. <https://festiwool.com/hitchin-2018>

And see the last page of this newsletter for news about our neighbouring machine knitting club in Leicester

CLUB SERVICES

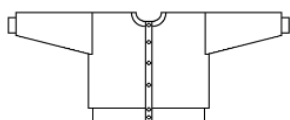
EQUIPMENT HIRE

We have a comprehensive list of equipment available for loan, including full machines as well as accessories. See Margaret for details.

We are also setting up a free lending library and would welcome donations of hardback machine knitting books for this purpose.



PATTERNS



In addition to patterns available in this newsletter and on our website, Lynda is also willing to make bespoke patterns via Knitware for members: these will be available as printouts or pdf files. Form attached for orders, or just let Lynda know the details.

Small Ads

BUSINESS ADS

❖ Knits 'n' Bits [Long Buckby]

We buy and sell used [serviced] knitting machines and accessories, and also sell books, punchcards, spares and more. Contact Wendy on 01327-842335 or email knitsnbits@live.co.uk. N.B. Response will be a little slower at the moment than usual, but she is still in business.

❖ **Elsie's Wool Shop: Ma's Buttons** in Victoria Road, Rushden, just off the high street. They supply wool, all plies, including cones and a large selection of buttons and haberdashery items. <https://www.masbuttons.co.uk/>

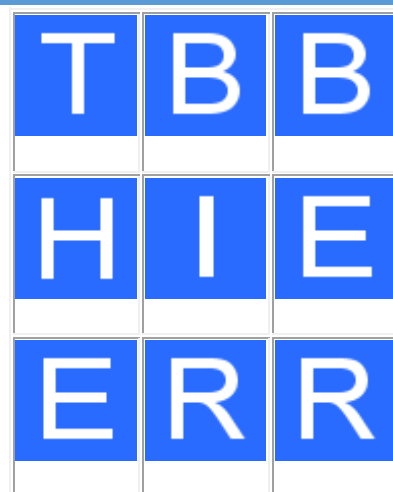
FOR SALE AND WANTED

PLEASE LET ME HAVE DETAILS OF ANYTHING YOU WOULD LIKE TO ADVERTISE IN THIS SPACE. SALES AND WANTED – FREE ADVERTISING!

PUZZLE

TRACKWORD

How many words of three or more letters can you find by tracking from one square to the next, going up, down, sideways or diagonally in order? You may not go through the same letter square again in any one word. Proper nouns or foreign words are not allowed. What is the hidden nine-letter phrase [two words]?



Target: 26 words

TIPS

TODAY'S THEME: RIBBING

There are many video tutorials on the web about ribbing: here are some links

<http://susanguagliumi.com/category/ribbing/>. Lots of ideas for using the ribber

<https://picturehealer.com/blog/how-to-machine-knit-full-needle-rib> basic instructions with pictures

<http://diananatters.blogspot.com/2009/09/ribber-lessons-so-far.html> links to 25 videos, a fairly comprehensive ribbing course

<http://www.needlesofsteel.org.uk/techniques.html#rib> links to various information on ribbing

NEXT YEAR'S PROVISIONAL CALENDAR. PLEASE LET US KNOW IF YOU WISH TO COMMENT OR HAVE ANY SUGGESTIONS.

14 th Jan	OPEN MEETING – making fabric as a topic
11 th Feb	PLATING AND WEAVING
11 th Mar	BAGS [all crafts]
8 th April	Anne Lavene
15 th April	BEGINNERS WORKSHOP fabric
13 th May	SOFT FURNISHING
10 th June	ERICA THOMSON - TASSELS
8 th July	GENERAL CRAFTS
12 th Aug	OPEN MEETING
9 th Sept	ACCESSORIES
16 th Sept	BEGINNERS WORKSHOP: shaping
14 th Oct	SUE BOOTH: SHOULDERS
11 th Nov	BASIC MAINTENANCE
9 th Dec	AGM/ COMPETITION, DISPLAY AND SALES End of year celebration

ANSWERS TO PUZZLE

**BIB BIT EBB ERE ERR HER HIE HIT IRE REH RIB RIT THE TIE BIER HEIR HERE HIRE
TIER TIRE HIRER THEIR THERE EITHER REHIRE RIBBER**

Nine letter phrase: THE RIBBER

NEIGHBOURING CLUB

LEICESTER MACHINE KNITTERS West End Centre, Andrewes Street (off Hinckley Road), Leicester LE3 5PA

As of September 2018, we meet every **1st Thursday of the month**, during the school term time, from **7pm to 9pm**. We also meet every **3rd Wednesday of the month** during term time, **10am - 2pm**

1st Thursday 7pm-9pm	3rd Wednesday 10am-2pm	Other club events / External events
September 6th AGM - £4 annual membership fee due (subs free night).	September 19th Caroline's scarf	
October 4th Poppies (Bob and Jane)	October 17th, 10am-4pm Sue Booth workshop	October 13th (Sat) Cossington St library pop-up October 27th / 28th Big Textile Show
November 1st Bob demos scarf for libraries	November 14th Your own choice / practice scarf	
December 6th Social including a raffle and MK/HK competition Categories to be decided on evening depending on number of entries	December 19th NO MEETING	December 4th Christmas lunch at Leicester college (Freemans Common Campus) - 12 noon
January 3rd Ratios and shaping - practice squares (Bob)	January 9th Practical - knitting and sewing up of squares	
February 7th Buttonholes (Sheila)	February 20th Sue's Pouch	February 20th Committee meeting
March 7th Garter bar (Jane and Bob)	March 20th Practical (Sue and Bob)	March 14-17th The Creative Craft Show (Birmingham NEC)
April 4th Skirts - patterns, stitch patterns and shape	April 17th Practical - trying out skirt ideas	April (TBA) MK Live, Nottingham
May 2nd Skirts - show and tell	May 15th Clair Crowston workshop (TBA)	
June 6th Start cushion project	June 19th Practical - cushion covers	
July 4th Social, raffle and cushion competition	July 17th Bill King talk (TBA)	July 17th Committee meeting

Sheila Johnson, Secretary

Home phone: 0116 2715643 Mobile: 07468618527

email: sheila.johnson18@hotmail.com

<http://www.leicestershiremk.org.uk/index.html>